

Embarcadero Performance Center™

24x7 Database Performance Monitoring



EMBARCADERO
TECHNOLOGIES



Embarcadero® Performance Center is a 24x7 database monitoring tool that ensures maximum database availability and performance throughout your enterprise.

Configurable SQL capture, alert thresholds, notifications, and escalation paths allow administrators to access historical performance analysis data as well as identify and diagnose problems occurring in real-time throughout the enterprise.

- Monitor performance real-time, 24x7
- Customize alarm thresholds, notifications, and escalation paths
- Verify overall database health with the Health Index
- Create custom historical performance reports

MONITOR PERFORMANCE REAL-TIME, 24x7

Database professionals need clear and concise methods to ensure the viability of every database they manage. Performance Center helps DBAs spot performance issues impacting an organization's bottom line. In real-time, DBAs can observe IBM® DB2® LUW, Microsoft® SQL Server, Oracle®, and Sybase® databases in a single view to see how databases are performing at any point in time. DBAs can then quickly drill down into every detail of a database's performance to determine the root cause of any response problems. Configurable SQL capture offers a pro-active approach by automatically triggering profiling sessions when a threshold has been violated.

With 24x7 coverage, performance issues are detected in real-time – before they threaten a database's health. DBAs can initiate an unattended, "lights out" monitoring schedule for early problem detection and notification. Blackout schedules will prohibit threshold checking during busy periods. You can also directly embed a stored procedure for dynamic stop-and-start data source monitoring into nightly backup scripts.

CUSTOMIZE ALARM THRESHOLDS, NOTIFICATIONS, AND ESCALATION PATHS

DBAs can customize Performance Center alerts to define how far in advance they want to be notified of problems, how they want to be notified, as well as who receives notification under specific conditions. Performance Center can also respond to database alarms by invoking a command line or SQL job to automatically fix the problem before database performance is adversely affected.

VERIFY OVERALL DATABASE HEALTH WITH THE HEALTH INDEX

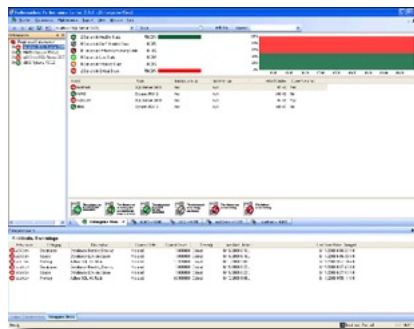
The Embarcadero Health Index is a single indicator that communicates the overall performance level of every monitored database. By sampling critical statistics such as memory, I/O, contention, space, network, objects, users, and SQL, Performance Center quickly determines a database's complete performance picture. You can customize each database's Health Index, establishing individualized thresholds and measurements that apply to each unique database scenario.

CREATE CUSTOM HISTORICAL PERFORMANCE REPORTS

Performance Center offers a selection of reports that detail the global performance of all databases in an easy-to-understand format for CIOs, database managers, and DBAs. Historical reporting allows users to compare current performance to historical user-defined points in time. Flexible, concise reporting ensures that everyone responsible for critical application availability and performance stays informed.



Quickly navigate through key performance information for a single data source.



Enterprise View – Observe IBM DB2 LUW, Microsoft SQL Server, Oracle, and Sybase databases in a single view and drill down into every detail of a database's performance to determine root cause of each problem.

Related Products

DBArtisan®

The leading cross-platform database administration solution helps DBAs maximize performance, availability, and security.

Embarcadero® DB Optimizer™

Automate error-checking and corrections for database schema to quickly and easily improve data quality and system performance.

Embarcadero® All-Access™

Instant access to the languages, tools, and technologies to design, build, and run your software applications and database systems.

Features	Description
Performance Center	
Database Monitoring	
Unattended Monitoring ("Lights-out")	Early problem detection and notification
SQL Capture	Configurable 24x7 SQL text capture automatically triggers a SQL capture session when there is a threshold violation. Session profiles drill down into the SQL statements for detailed performance metrics
Database Home Page	Displays statistical performance and availability indicators for each database
Health Index	Monitors key performance indicators such as: memory, I/O, contention, space, network, objects, users, and SQL. Displays customizable, at-a-glance statistics.
Consolidated View	One view for all Oracle, Sybase ASE, IBM DB2 for LUW, and Microsoft SQL Server databases
Thresholds and Notifications	
Custom Thresholds and Notifications	Sets pager, email, and system broadcast notifications as well as who gets notified under specific conditions
Alarm Center	Pinpoints critical problems in the most visible databases and allows a view into all alarms for all databases regardless of platform in the enterprise.
Programmable Responses	Supports automatic scripted responses (command line or SQL job invocation)
Reporting	
Flexible Report Formats	Create tailored reports for CIOs, database managers, and DBAs
Export	Microsoft Excel and other formats
Integrates with Microsoft Task Scheduler	Enables report generation on a schedule
Historical Reporting	Creates a "worst databases" report with comparison features to measure historical performance
Installation	
Server-side	Does not install agents on the monitored machine; but installs objects and stored procedures on the machine
Web-based Interface	Browser-type navigation let's you move quickly between different monitored databases and statistics

DBMS Support

Embarcadero Performance Center currently supports monitoring of the following DBMS platforms:

- IBM® DB2® for LUW 8.0 and 9.0
- Microsoft® SQL Server 2000, 2005 and 2008
- Oracle® 8i, 9i, and 10g
- Sybase® ASE 12.0, 12.5 and 15.0

System Requirements

Embarcadero Performance Center may monitor any data source regardless of the chosen operating system platform. Embarcadero Performance Center requires the following:

Embarcadero Performance Center Server

- 250 MB of hard disk storage recommended
- 512 MB of RAM recommended
- Apache Version 2.2.6 (provided with install)
- Microsoft Windows 2000, Windows Server 2003, Windows XP, Windows Vista
- Database vendor-specific middleware for connectivity to repository and monitored data sources

Embarcadero Performance Center Client

- 75 MB of hard disk storage recommended
- 64 MB of RAM recommended
- Microsoft Windows 2000, Windows Server 2003, Windows XP, Windows Vista

Embarcadero Performance Center Repository

- Microsoft SQL Server 2000, 2005 and 2008
- IBM DB2 for LUW Version 8.2 and 9.0
- Oracle 8i, 9i, and 10g
- Sybase ASE 12.0, 12.5, and 15.0
- Default storage space of 75 MB. Large environments may require additional storage space.

Download a Free Trial at www.embarcadero.com

Corporate Headquarters | Embarcadero Technologies | 100 California Street, 12th Floor | San Francisco, CA 94111 | www.embarcadero.com | sales@embarcadero.com