

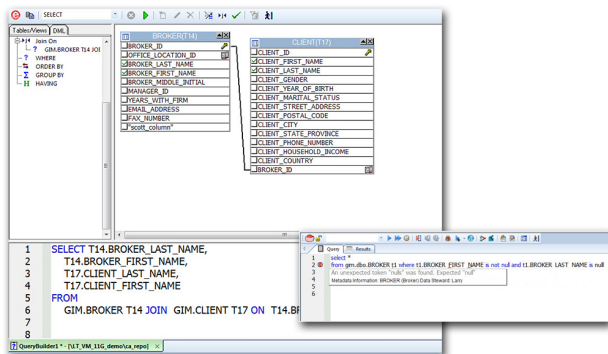


Rapid SQL® XE5

The intelligent IDE for SQL development

embarcadero

Embarcadero® Rapid SQL® XE5 is an award-winning SQL IDE giving database developers and DBAs the ability to create high-performing SQL code on all major databases from a single interface. The toolset simplifies SQL scripting, query building, object management, debugging and version control with easy-to-use, innovative tools.



Luxury Link selected Rapid SQL to improve SQL code quality, reduce code volume, and improve overall customer experience. When the new site launched, the volume of code in use was reduced by 80%.

Luxury Link

Database developers are tasked with creating software applications that include complex business logic accessing ever-changing database ecosystems. Both aspects need to be properly understood in order to create high-performing applications. Unfortunately, corporate database ecosystems are complex. As database environments grow in volume, velocity and variety, the database developer's role becomes even more challenging and time consuming.

The most time consuming challenges are:

- Working across different database platforms
- Visualizing and creating complex SQL queries
- Integrating database development with source code control

Modern database developers need tools to work more efficiently. Database developers should be able to seamlessly work across disparate database systems and integrate their work with source control systems as part of their regular software development cycle. Only by simplifying an organization's database ecosystem and adapting to the developer's work environment, can the database developer keep up with modern data trends.

Rapid SQL helps database developers and DBAs produce high-performing SQL code faster. With support for all major database platforms from a single interface, teams can standardize on one powerful heterogeneous SQL IDE tool. A rich development environment simplifies SQL scripting, query building, object management, project management, and version control in live databases or offline source code repositories. Intuitive SQL editing, debugging, and optimization tools help create high performance SQL code.

platforms from a single interface, teams can standardize on one powerful heterogeneous SQL IDE tool. A rich development environment simplifies SQL scripting, query building, object management, project management, and version control in live databases or offline source code repositories. Intuitive SQL editing, debugging, and optimization tools help create high performance SQL code.

Develop SQL Code Quickly, Efficiently

The *SQL IDE* is a clean, slick development environment ideal for creating and modifying SQL code geared to the needs of application developers. Real-time quick fixes flag and correct inefficient SQL automatically. The IDE is also equipped with SQL code assist, real-time SQL syntax validation, and project-level SQL file cataloging and search features.

Visually Accelerate Query Building

Database developers can save time and start developing SQL code immediately with Visual Query Building tools. Rapid SQL gives you the ability to construct complex SQL statements with point-and-click ease using the Visual Query Builder.

Debug SQL Code, Functions, and Stored Procedures

SQL Debugger simplifies the task of finding coding errors. The SQL Debugger is another database productivity tool that lets you debug SQL Server, Oracle, Sybase or DB2 stored procedures as well as Oracle functions. The Debugger features basic execution, line-by-line execution, breakpoint support, and other common debugging features.

Benefits Summary

- Develop SQL code quickly, efficiently
- Visually accelerate query building
- Debug SQL code, functions, and stored procedures
- Collaborate effectively with version control
- Support data governance initiatives through improved code quality

General Features	
Multi-platform Support	Manage all major DBMSs from a single interface. Support includes Oracle, SQL Server, Sybase, DB2, MySQL, InterBase & Firebird
Embarcadero® AppWave™	Enables centralized license management and tool deployment
Unicode Support	Full Unicode character support throughout the application
Intuitive Interface	Automates common and repetitive tasks with easy-to-use SQL editors and wizards
Object Support	
Graphical Object Editors	Create, drop, or alter a wide variety of database objects, including tables, constraints, indexes, views, procedures, functions, triggers, and packages. Editors are common for all objects (across all platforms).
Wizard-driven Object Creation	Wizards guide users through the creation of objects, prompting for the options that are applicable to objects found on the selected database platforms
Grouped Object Command Execution	Execute database commands against a select grouping of objects (drop, compile, analyze, etc)
Extended Alter Support	Provides the ability to generate complex scripts as a result of object manipulation (inserting a column in the middle of a table)
SQL Scripting and Editing	
Visual Query Builder	Constructs even the most complicated SQL statements with point-and-click ease
Code Templates	Eliminates the need to memorize and type SQL syntax
SQL Editor	Code folding, code collapse/roll-up, syntax coloring, hot key assignments, configurable auto replace of objects, bind variable support, selective statement execution
Context-sensitive DBMS Actions	DBMS actions, such as Extract and Drop, are available directly in the context menu of the appropriate tokens in the SQL editor

Debugging, Performance Optimization

Code Analyst	Performs detailed response time analysis on the execution of stored procedures and functions
SQL Debugger	Debugs programmable objects such as stored procedures, functions, packages, and triggers. Available for DB2 for LUW, Oracle, SQL Server, and Sybase.
SQL Profiler	Captures metrics of various PL/SQL programmable objects on Oracle 8.1.5 and higher

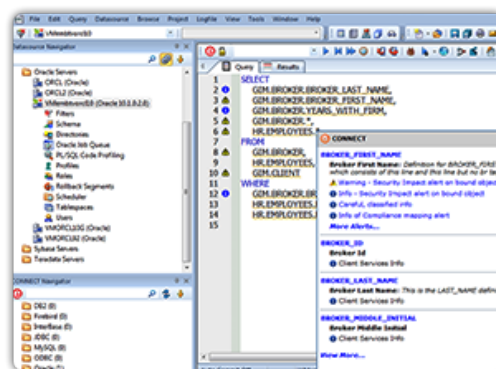
SQL Scripting and Editing

Advanced Code Assist	Lists context-sensitive suggestions as you type (e.g., tables, columns, procedures, functions, and code templates) and is available offline
Code Formatting and Profiles	Code folding, syntax coloring, comment toggling, and other auto formatting features make it easy to read, navigate, and edit large SQL files. Customize and share various SQL formatting options by creating SQL formatting profiles.
Context-sensitive DBMS Actions	DBMS actions, such as Extract and Drop, are available directly in the context menu of the appropriate tokens in the SQL editor
Syntax & Semantic Validation	Validate SQL files and flags all DBMS-specific parser violations or references to objects not found in the target database
Quick Fixes	Real-time parsing provides code quality suggestions for improving SQL performance as you type
SQL Debugging	Debug Java, step seamlessly into SQL (i.e. stored procedure) and back into Java again – true system-wide, round-trip debugging

Data Governance*

Inline Metadata	Gives users real-time metadata visibility in the SQL IDE and will gain valuable context in SQL query development with awareness of sensitive data. Examples of metadata attributes are: table descriptions, PII, data governance policy information, etc.
Centralized Datasource Repository	Provides the functionality for users to work from a common, centralized datasource repository

* Data Governance features require CONNECT and ER/Studio



Support Data Governance Initiatives through Inline Metadata

Enhance the data quality of your organization with Rapid SQL's developer capabilities. Instantly gain valuable context to SQL query development and become aware of sensitive data stemming from PII, regulatory, data governance policies and their policy owners.

Ready to learn more about Rapid SQL? Contact us at 1-888-233-2224 or sales@embarcadero.com

For data modelers and data architects, ask us about ER/Studio, the ultimate design, modeling and collaboration solution.