



Viewpoint

Top Five Reasons to Migrate from CA AllFusion™ ERwin® Data Modeler to Embarcadero® ER/Studio®

September 2009

Corporate Headquarters

100 California Street, 12th Floor
San Francisco, California 94111

EMEA Headquarters

York House
18 York Road
Maidenhead, Berkshire
SL6 1SF, United Kingdom

Asia-Pacific Headquarters

L7. 313 La Trobe Street
Melbourne VIC 3000
Australia

INTRODUCTION

The volume of data is growing dramatically and the structures of the databases that house that data are more complex than ever before. Companies are now looking to their data models to help them understand their data assets in new and intricate ways. Data models that might have once focused solely on understanding the structure of the database for application developers, are now being called on to solve fundamental business questions like, “what is the single definition of a customer?” As companies look toward solving these business problems they need to take advantage of the high end features available in data modeling tools. This paper discusses the top five reasons why ERwin Data Modeler customers should make the change to Embarcadero ER/Studio.

1. SUPERIOR MODEL FILE SYSTEM TECHNOLOGY

ER/Studio allows users to create multiple, mutually independent physical models from one common logical model *within the same* .dm1 file; ERwin requires *multiple* files to achieve the same effect thus losing the traceability between the logical and physical artifacts. ER/Studio’s separate but integrated approach offers the user a complete, easy to understand solution for synchronizing and updating logical models, physical models and live databases without having to manage and synchronize many loose files. These features enable administrators to:

- Support database applications existing on heterogeneous database platforms such Oracle and Microsoft while maintaining traceability to the original logical model.
- Prototype applications on non-production systems such as Access and subsequently move them to a more robust RDBMS, such as Oracle, Sybase or Microsoft, without having to manage multiple files.
- Maintain physical data models for test, development and production environments within a single environment.
- Impact analysis and traceability provided via “Where Used” capabilities.

2. SUPERIOR LINEAGE, METADATA IMPACT ANALYSIS AND TRACEABILITY

ER/Studio provides features for maintaining the traceability between the original logical model and multiple physical models. Coupled with ER/Studio’s ability to maintain multiple models within the same file, impact analysis is far easier and more reliable than with ERwin. In addition to reports, ER/Studio also provides a “Where Used” feature which includes the following capabilities:

- “Where Used” identify where logical business entities are used in multiple physical models to assess usage, impact analysis and general data enterprise.
- “Where used” also identifies logical entities that have been ‘denormalized’ in physical database designs.

- “User-defined” mappings allow the modeler to map two disparate logical and physical models when a bottom-up approach is needed.

An example of “Where Used” showing two physical tables with different names derived from a single logical entity is shown in Figure 1:

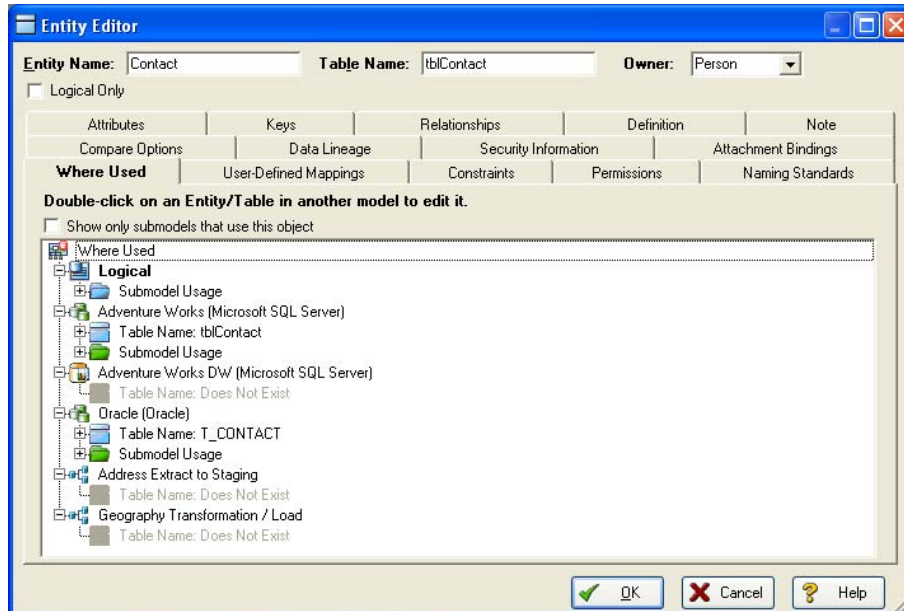


Figure 1 Entity Editor

ER/Studio also makes tracing data lineage far easier than ERwin. Documenting data lineage between systems is more critical than ever as data models are leveraged for SOA implementations, data warehouse projects, CDI/MDM projects and other data integration purposes. ER/Studio offers modelers visual data lineage functionality to visually represent how data is mapped between systems. This allows modelers to drive source/target mappings from the model rather than managing them separately in, say, an Excel spreadsheet or Access database. The data flow components are also integrated with ER/Studio’s Where Used technology to provide impact analysis of what entities/tables are involved in what data flow processes.

3. SUPERIOR DIAGRAM LAYOUT & NAVIGATION FEATURES

DIAGRAM LAYOUT

A common challenge to data modelers is producing a readable diagram. ER/Studio provides the industry’s most effective options for automatic layout of diagrams. These options are particularly useful when reverse engineering from source that do not contain diagram information, such as .sql DDL files and database catalogues.

Users can choose from the following general layout types:

- Circular
- Orthogonal
- Tree
- Hierarchical
- Symmetric
- Tree
- Disconnect Elements

Each of these layout types contains extensive options to ensure that the resulting diagram is readable and understandable.

DIAGRAM NAVIGATION

ER/Studio is designed to dramatically increase user productivity through superior navigation of large, complex data models. This saves time when searching for deeply buried elements in a model. ER/Studio provides a number of features to assist with the management of large models, such as:

- Multiple levels of nested Submodels (i.e. Submodels of Submodels of Submodels...), allowing modelers to present simpler “subset” diagrams that focus on specific areas of interest.
- Numerous navigational aids, including:
 - Interactive panning and zoom features in the main diagram window.
 - Relationship navigation enabling the user to move to the entity at the far end of a relationship; this feature automatically pans through the diagram if necessary.
 - An Overview Window enabling the user to pan through the diagram via a thumbnail view.
 - A Zoom Window to display items under the mouse cursor in a separate window at 100% magnification. This is useful for examining detail of a complex diagram when the main diagram window is at a very low level of magnification, e.g. “zoomed out”.
 - A variety of significantly superior diagram object display options such as:
 - Displaying logical names alongside physical names if preferred
 - Displaying indexes bound to tables
 - Displaying “Attachments” (i.e. UDPs) on entities/tables
 - Displaying ‘code’ objects (procedures, materialized views, functions, etc) on the diagram display

4. SUPERIOR MODEL PUBLISHING AND COMMUNICATION

ER/Studio Enterprise includes a web portal that allows for “near” real-time publication of the information contained in the ER/Studio repository (offered with the Enterprise Edition). The portal allows developers, DBAs and business analysts to browse, search and report on the model metadata via a web browser. It drastically streamlines the process of communicating the models by offering a “self-service” method for publishing the information. The data architects no longer need to refresh reports any time a model changes. The portal has a separate

reporting repository that is optimized for searching and reporting that is kept in synch with the ER/Studio repository via an ETL process.

5. SUPERIOR LICENSING FLEXIBILITY

ER/Studio provides a variety of licensing options to best fit your company's modeling needs. As opposed to many software products like ERwin that only offer workstation licensing, ER/Studio offers three flexible licensing options:

- Workstation
- Network Named User
- Network Concurrent

These flexible licensing options allow organizations to better manage and control their product licenses, while at the same time maximizing usage. The network-based licensing options provide a flexible, cost-effective solution for organizations with a larger number of users, who want greater control over software assets, or the ability to share a pool of licenses between users.



Embarcadero Technologies, Inc. is a leading provider of award-winning tools for application developers and database professionals so they can design systems right, build them faster and run them better, regardless of their platform or programming language. Ninety of the Fortune 100 and an active community of more than three million users worldwide rely on Embarcadero products to increase productivity, reduce costs, simplify change management and compliance and accelerate innovation. The company's flagship tools include: Embarcadero® Change Manager™, Embarcadero® RAD Studio, DBArtisan®, Delphi®, ER/Studio®, JBuilder® and Rapid SQL®. Founded in 1993, Embarcadero is headquartered in San Francisco, with offices located around the world. Embarcadero is online at www.embarcadero.com.